

## WHAT IS THE NORTHERN PRESCRIPTION DISCOUNT PLAN (NPDP)?

The NPDP card is a way for residents who lack drug coverage to get prescription drugs at an average discount of about 25 percent. If you have a NPDP card you can get medicine for less at participating pharmacies throughout the U.S.

## WHO IS ELIGIBLE?

To be eligible you must:

- 1) be a resident of a participating health department county
- 2) have no other or limited prescription coverage

## HOW MUCH LESS WILL I PAY FOR MEDICINE?

People who present a NPDP card at a participating pharmacy can expect to save about 25 percent off the retail price of a typical “market basket” of drugs. Savings will typically be between 5 and 30 percent. Discounts as high as 70 percent are possible but not typical. Savings depend on the kinds of medicines used, where you shop, and if the pharmacy is already having a sale on the medicine.

## HOW DOES IT WORK?

1. Call your pharmacy and ask if they accept the NPDP card.
2. Take your prescription and your NPDP card to your pharmacy. You may have a 30-90 day supply, or less, of your prescription filled with your NPDP card. The pharmacist will fill the prescription and charge you the discounted price. You will be expected to pay for the medicine at the discounted prices. Always show your card for refills.

## ARE ALL DRUGS COVERED?

The discount is good on any medicine the pharmacy stocks and your doctor prescribes that is not an over-the-counter drug. Over-the-counter drugs are not covered even if they are prescribed by your provider.

## DOES IT COST ANYTHING TO GET THE CARD?

There is no cost for the card or to enroll in the program. You just pay the discounted price to the pharmacy.

## WHY SHOULD PEOPLE USE A NPDP CARD?

If you are without a prescription drug benefit you are a “cash customer” at the pharmacy. That means you pay the full cost of the drugs you need at retail prices set by the pharmacy.

The prices you pay may vary from pharmacy to pharmacy but they are almost always higher than the prices negotiated by pharmacy benefit managers operating on behalf of insurers. The NPDP card levels the playing field for you. You will be able to get medicine at a lower price.

## CAN I USE A MAIL SERVICE PHARMACY?

Yes. If you have difficulty getting to the pharmacy, or there isn't a participating pharmacy in your area, PharmaCare is a mail service pharmacy which you can use with your NPDP. Call 231-547-0295 or 1-800-432-4121 for more information, or call 1-800-346-9113 or visit [www.pharmacare.com](http://www.pharmacare.com) for an application

## WHO IS SPONSORING THIS PROGRAM?

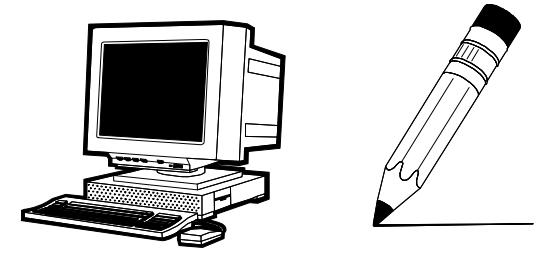
The program is sponsored by a partnership of Northern Michigan local health departments.

## MEDICARE RECIPIENTS

While Medicare recipients are eligible to participate in the NPDP, it is important that they determine their eligibility to participate in the State of Michigan's Elder Prescription Insurance Coverage (EPIC) Program. The benefits of that program are significantly better than those of the NPDP.

## HOW CAN THE NORTHERN PRESCRIPTION PLAN GET ME A DISCOUNT?

The NPDP works with a pharmacy benefit manager called PharmaCare. PharmaCare has negotiated prices with pharmacies that are lower than the retail prices that you pay as a cash customer. The lower prices are made available to you when you show your NPDP card at pharmacies.



## HOW CAN I APPLY FOR THE PROGRAM?

There are four ways to register for the NPDP program:

1. Fill out the application (on the back of this brochure) and send to:

**Northern Prescription Discount Plan  
Northwest Michigan Community Health Agency  
220 W. Garfield  
Charlevoix, MI 49720**

2. Over-the-phone registration can be taken by calling us at 1-800-432-4121 or 547-0295.
3. Applications can be faxed to 231-547-6238.
4. Applications are available on-line through the website at:

[www.nwhealth.org/RX.htm](http://www.nwhealth.org/RX.htm)

5. Complete one application for each individual.

Once the application is completed and processed your card will be mailed to you along with a list of participating pharmacies in the area. You will receive your card in two to three weeks.

# NORTHERN PRESCRIPTION DISCOUNT PLAN (NPDP)

Last Name \_\_\_\_\_ First Name \_\_\_\_\_ M.I. \_\_\_\_\_ SS# \_\_\_\_\_

Birth Date \_\_\_\_\_ Sex: ( ) Male ( ) Female Home Phone ( ) \_\_\_\_\_

Address \_\_\_\_\_ Apt # \_\_\_\_\_ City \_\_\_\_\_ State: MI Zip \_\_\_\_\_

Including yourself, how many people are living in your household? \_\_\_\_\_

Total Monthly household income (for statistical purposes):  Less than \$1,750  \$1,751 - \$2,400  \$2,401 - \$3,000  
 \$3,001 - \$3,700  \$3,701 - \$4,300  \$4,301 - \$5,000  Over \$5,000

County (check one):  Alcona  Alpena  Antrim  Benzie  Charlevoix  Cheboygan  Emmet  
 Iosco  Leelanau  Montmorency  Ogemaw  Oscoda  Otsego  Presque Isle

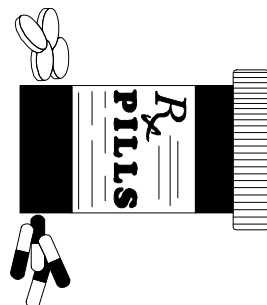
## Enroll by mail, FAX, phone or internet:

Northern Prescription Discount Plan, 220 W. Garfield, Charlevoix, MI 49720

Fax: (231) 547-6238 Phone: (231) 547-0295 or 1-800-432-4121

Internet: [www.nwhealth.org/RX.htm](http://www.nwhealth.org/RX.htm)

**NORTHERN PRESCRIPTION DISCOUNT PLAN  
NORTHWEST MICHIGAN COMMUNITY  
HEALTH AGENCY  
220 W. GARFIELD  
CHARLEVOIX, MI 49720**



**NORTHERN  
PRESCRIPTION  
DISCOUNT  
PLAN  
(NPDP)**

Sponsored and coordinated in Antrim,  
Charlevoix, Emmet and Otsego counties by:

**NORTHWEST MICHIGAN COMMUNITY  
HEALTH AGENCY  
220 W. Garfield  
Charlevoix, MI 49720  
547-0295 or  
1-800-432-4121  
[www.nwhealth.org/RX.html](http://www.nwhealth.org/RX.html)**